

# G033

London City Centre

London, ON

**BASIC RENT**  
\$11.95

**ADDITIONAL RENT**  
\$15.68

**GROSS COST PER SF**  
\$27.63

**COST PER MONTH**  
\$2,509.72

## SUITE DETAILS

**MIN DIVISIBLE**  
No

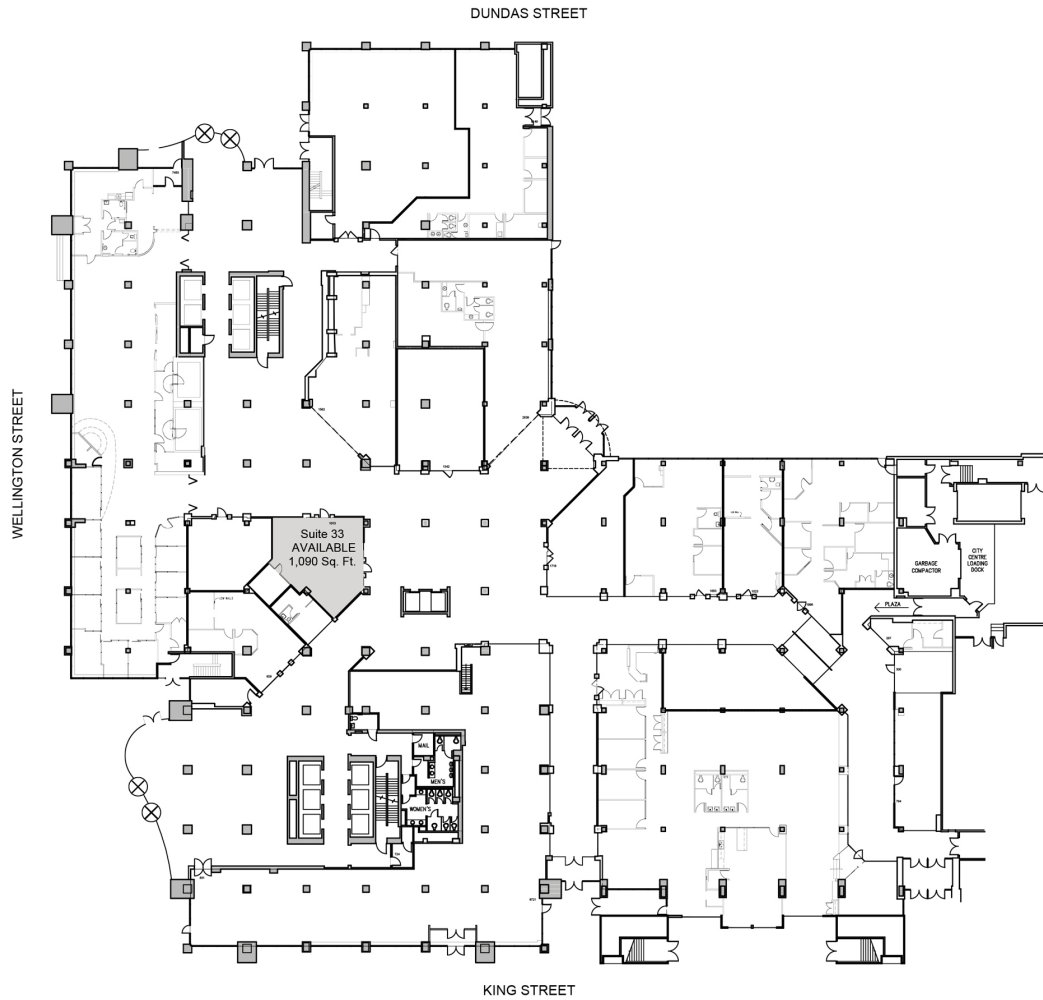
**MAX CONTIGUOUS**  
1,090 SF

**UNIT TYPE**  
Office

**SQUARE FEET**  
1,090 SF

**FLOOR**  
Ground Floor

**AVAILABILITY**  
Immediate



SCALE : 1" = 50'

