

G004

London City Centre

London, ON

BASIC RENT
\$11.95

ADDITIONAL RENT
\$15.68

GROSS COST PER SF
\$27.63

COST PER MONTH
\$5,385.55

SUITE DETAILS

MIN DIVISIBLE
Yes

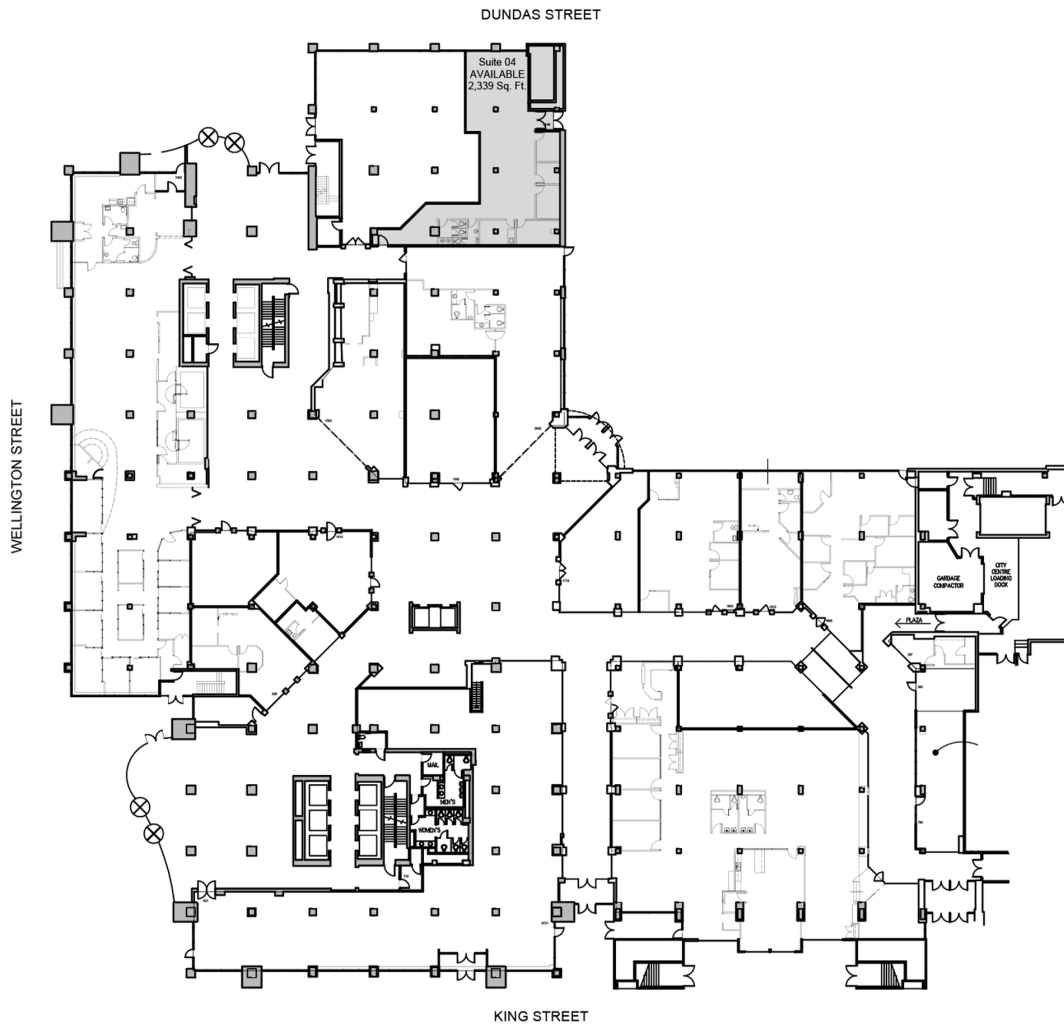
MAX CONTIGUOUS
2,339 SF

UNIT TYPE
Office

SQUARE FEET
2,339 SF

FLOOR
Ground Floor

AVAILABILITY
Immediate



USABLE AREA

SCALE : 1" = 20'

