

G035

London City Centre

London, ON

BASIC RENT
\$11.95

ADDITIONAL RENT
\$15.99

GROSS COST PER SF
\$27.94

COST PER MONTH
\$1,795.14

SUITE DETAILS

MIN DIVISIBLE
No

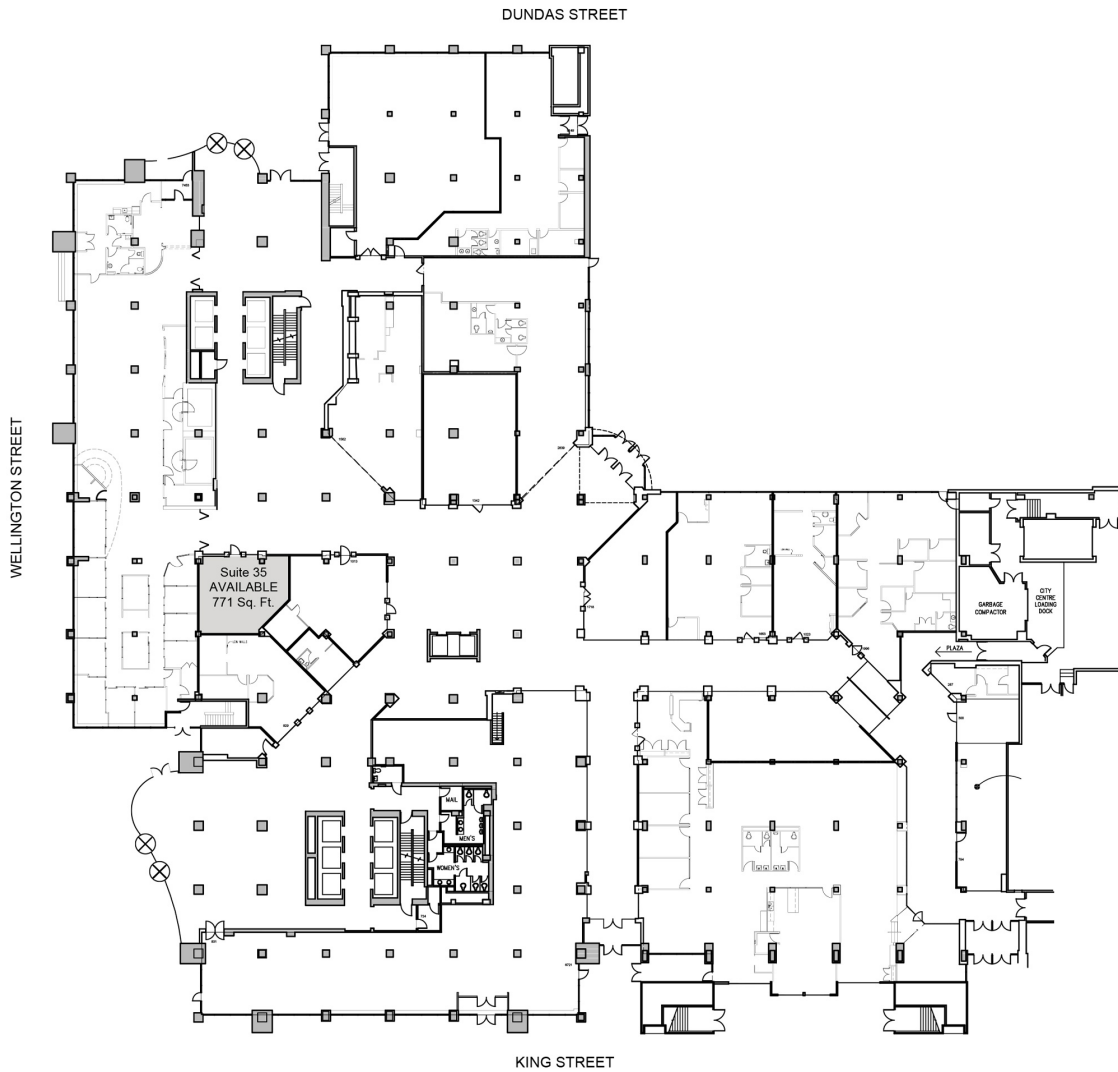
MAX CONTIGUOUS
771 SF

UNIT TYPE
Office

SQUARE FEET
771 SF

FLOOR
Ground Floor

AVAILABILITY
Immediate



 USABLE AREA

SCALE : 1" = 20'

