

# M039

London City Centre

London, ON

**BASIC RENT**  
\$11.95

**ADDITIONAL RENT**  
\$15.68

**GROSS COST PER SF**  
\$27.63

**COST PER MONTH**  
\$1,722.27

## SUITE DETAILS

**MIN DIVISIBLE**  
No

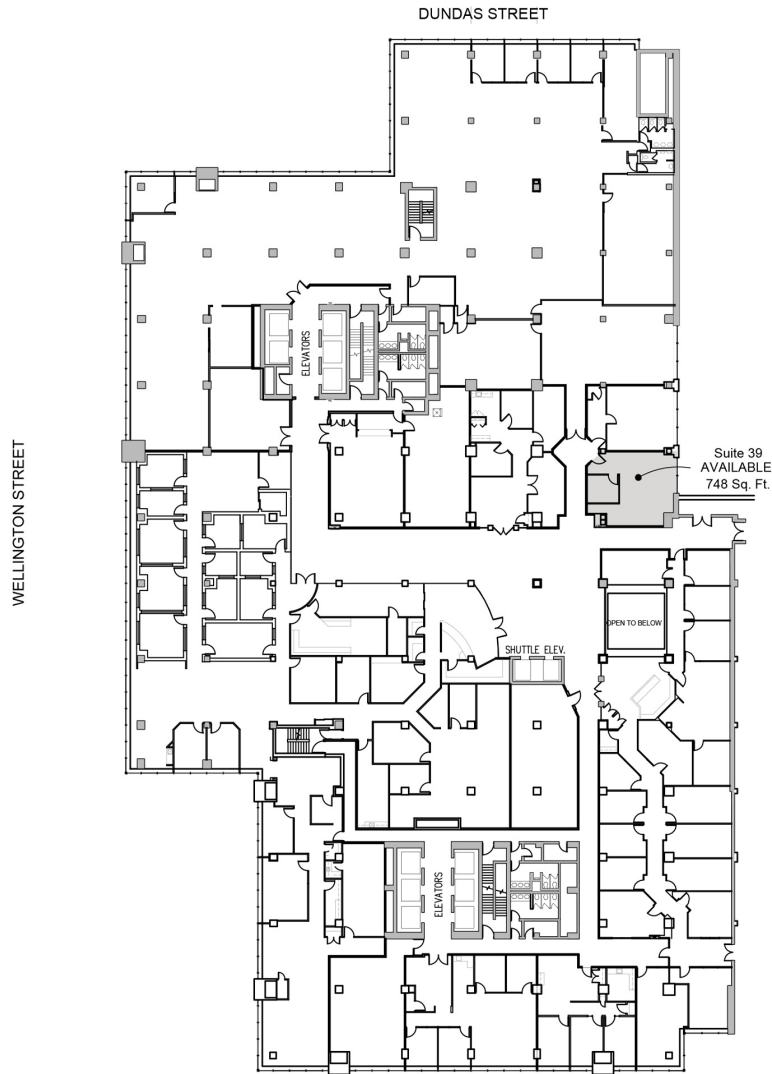
**MAX CONTIGUOUS**  
748 SF

**UNIT TYPE**  
Office

**SQUARE FEET**  
748 SF

**FLOOR**  
Mezzanine

**AVAILABILITY**  
Immediate



 USABLE AREA

SCALE : 1" = 50'

