

210

2810 Matheson

Mississauga, ON

BASIC RENT
\$17.00

ADDITIONAL RENT
\$18.29

GROSS COST PER SF
\$35.29

COST PER MONTH
\$13,648.41

SUITE DETAILS

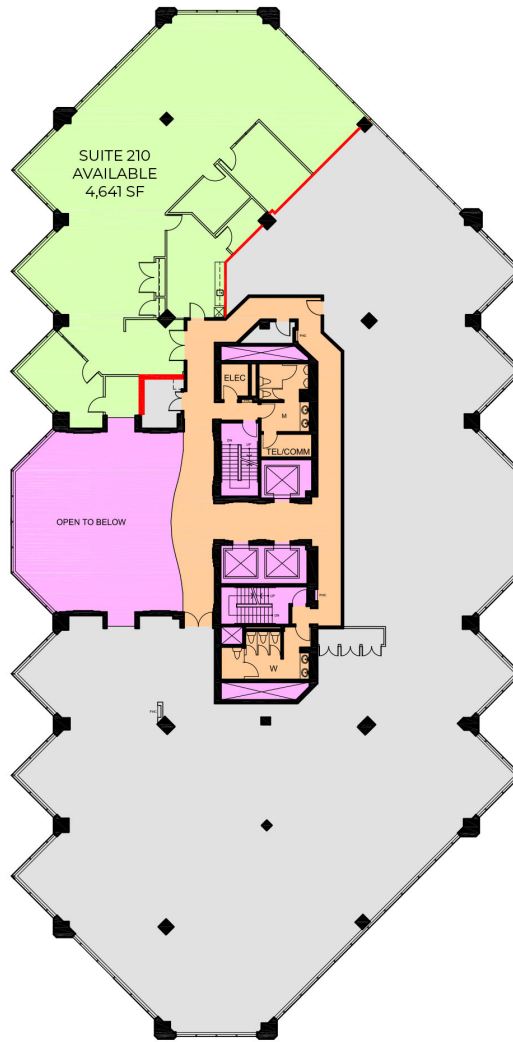
MIN DIVISIBLE
No

UNIT TYPE
Office

SQUARE FEET
4,641 SF

FLOOR
2

AVAILABILITY
Immediate



0 10 50 FT.

