

300

2810 Matheson

Mississauga, ON

BASIC RENT
\$17.00

ADDITIONAL RENT
\$17.61

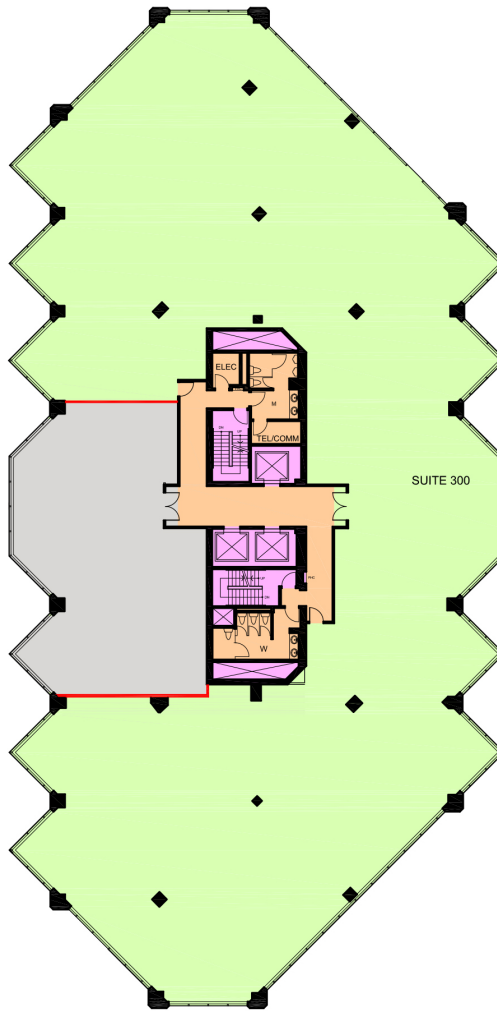
GROSS COST PER SF
\$34.61

COST PER MONTH
\$47,095.56

SUITE DETAILS

UNIT TYPE	SQUARE FEET	FLOOR
Office	16,329 SF	3

AVAILABILITY
Immediate



0 10 50 FT.

