

# 301

2810 Matheson

Mississauga, ON

**BASIC RENT**  
\$17.00

**ADDITIONAL RENT**  
\$18.29

**GROSS COST PER SF**  
\$35.29

**COST PER MONTH**  
\$19,703.58

## SUITE DETAILS

**MIN DIVISIBLE**  
No

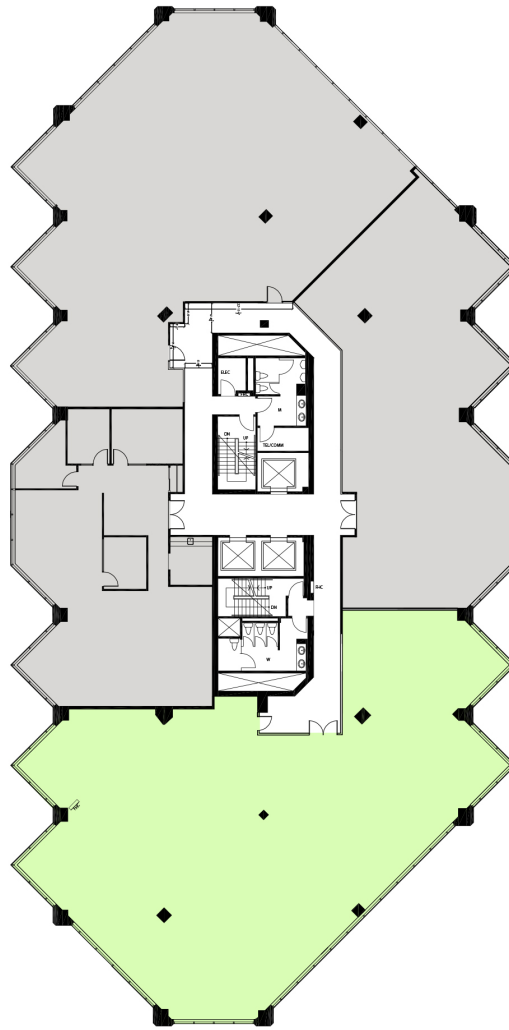
**MAX CONTIGUOUS**  
10,300 SF

**UNIT TYPE**  
Office

**SQUARE FEET**  
6,700 SF

**FLOOR**  
3

**AVAILABILITY**  
Immediate



SQUARE FOOTAGE IS AN APPROXIMATION  
AND IS SUBJECT TO REMEASURING

