

# 600

2810 Matheson

Mississauga, ON

**BASIC RENT**  
\$17.00

**ADDITIONAL RENT**  
\$17.61

**GROSS COST PER SF**  
\$34.61

**COST PER MONTH**  
\$54,908.76

## SUITE DETAILS

**MIN DIVISIBLE**  
Yes

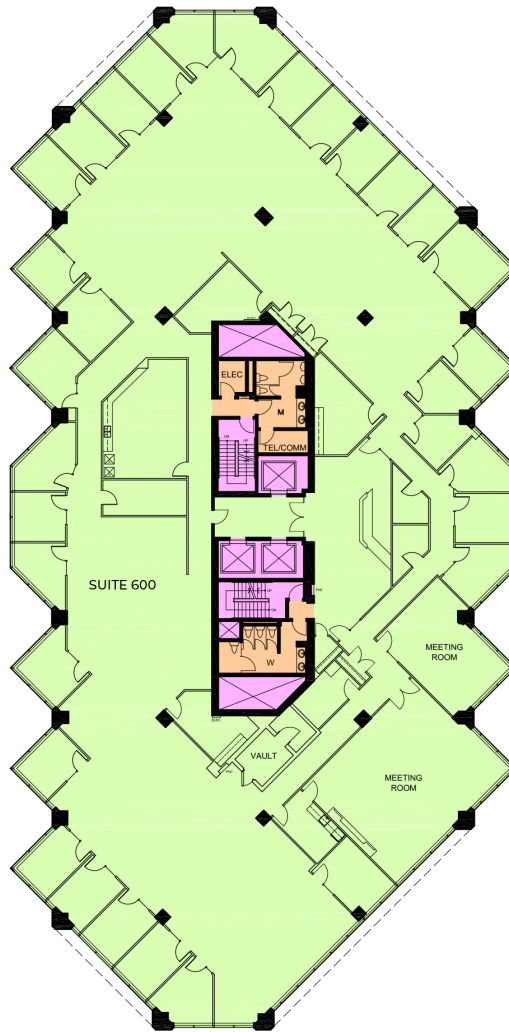
**MAX CONTIGUOUS**  
19,038 SF

**UNIT TYPE**  
Office

**SQUARE FEET**  
19,038 SF

**FLOOR**  
6

**AVAILABILITY**  
Coming Soon



0 10 50 FT.

