

1500

5001 Yonge St.

Toronto, ON

BASIC RENT
\$20.00

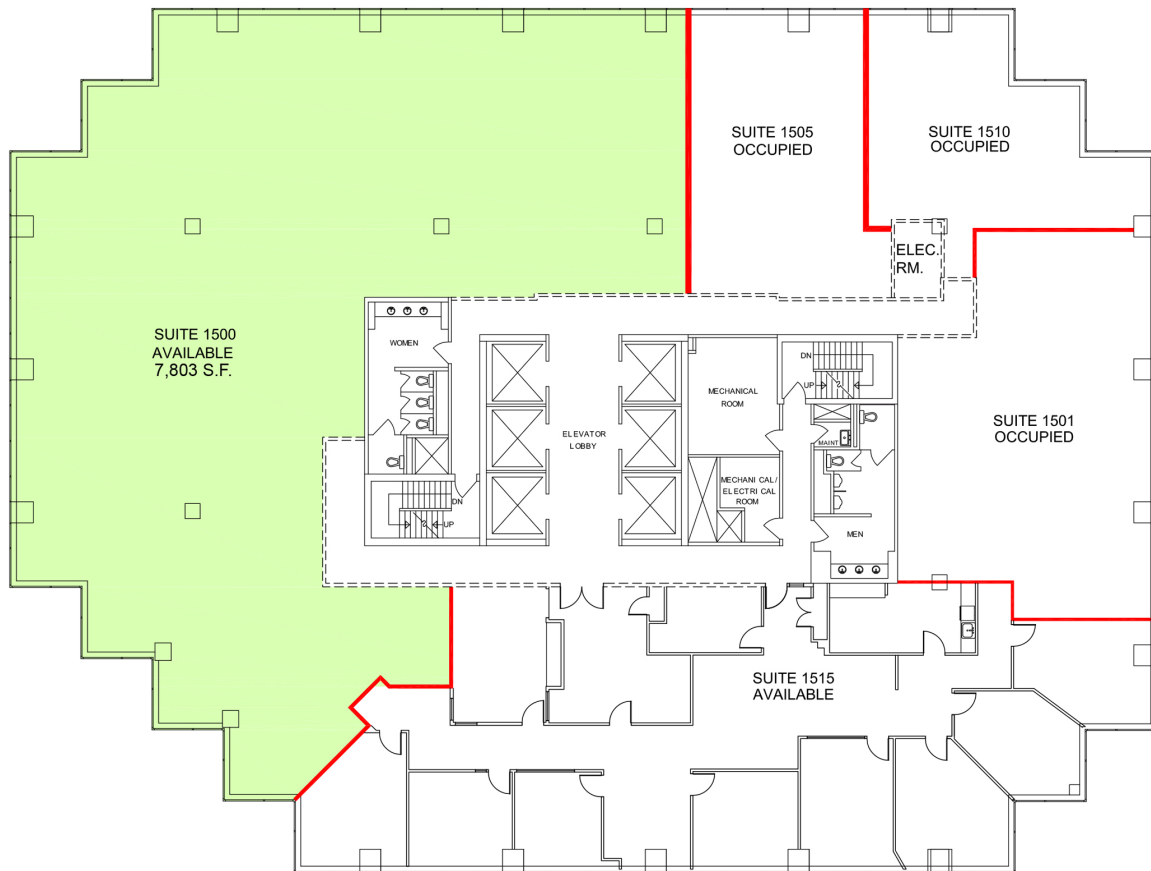
ADDITIONAL RENT
\$20.65

GROSS COST PER SF
\$40.65

COST PER MONTH
\$26,432.66

SUITE DETAILS

MIN DIVISIBLE	UNIT TYPE	SQUARE FEET
No	Office	7,803 SF
FLOOR	AVAILABILITY	
15	Immediate	



■ USABLE AREA
— DEMISING WALL

0 10 50 FT.

