

300

5001 Yonge St.

Toronto, ON

BASIC RENT
\$20.00

ADDITIONAL RENT
\$20.87

GROSS COST PER SF
\$40.87

COST PER MONTH
\$64,479.24

SUITE DETAILS

MIN DIVISIBLE
Yes

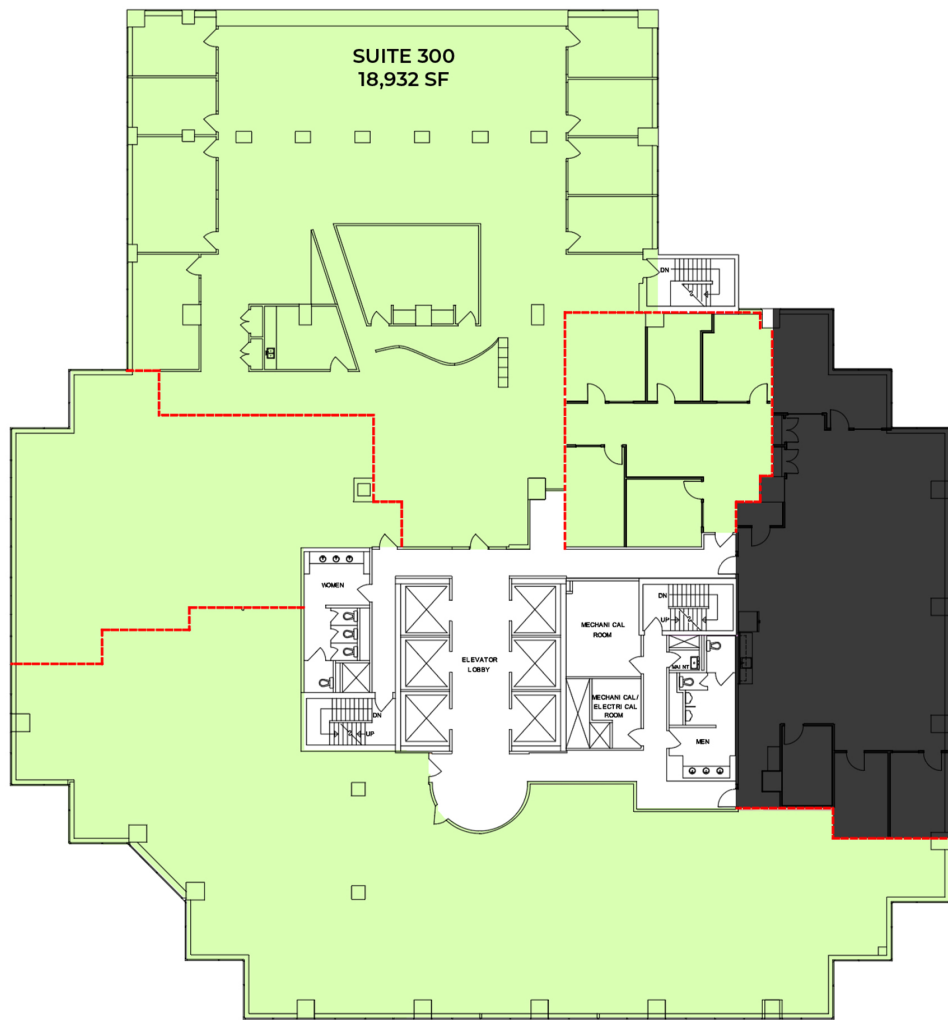
MAX CONTIGUOUS
18,932 SF

UNIT TYPE
Office

SQUARE FEET
18,932 SF

FLOOR
3

AVAILABILITY
Immediate



■ AVAILABLE
■ OCCUPIED
- - - DEMISING WALL

0 10 50 FT.

